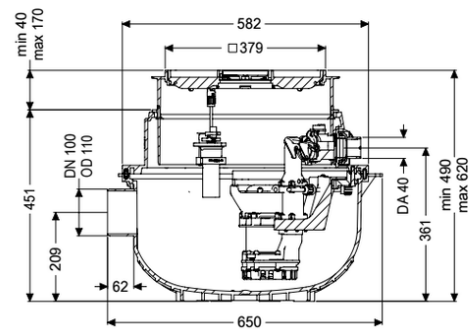


## Aqualift S Compact lift stat. Duo, GTF500, resist, Floor sl, tileable



### Article information

Item no.: 280530XC  
GTIN: 4026092082713  
Price group: 20

### Advantages

- Space-saving due to installation in floor slab with integrated drainage function
- Easy retrofitting from Mono to Duo possible
- Quiet operation, as the pump installation does not cause any structure-borne sound emissions.

### Description

The ready to plug in lifting station for faecal-free wastewater is equipped with one or two submersible pumps and a backflow preventer. The collection tank made of permanently resistant polymer (PE) has an open pump tank. One-handed closures enable easy removal of the integrated components. The system for installation in the floor slab is preassembled for final installation on site.

Variant

Type of system:

Resistant:

duo pump

Resistant to saline media, wastewater from water softening systems and wastewater containing condensate from heating systems

Control unit

integrated

Rim width:

Backwater protection:

General characteristics

Colour:

Standard:

Type of wastewater:

Installation situation:

Delivery state:

black

EN 12050-2

without sewage

floor slab installation

Installation-ready (connection parts must be connected on site)

System type:

Duo

#### Dimensions

|  |                                     |
|--|-------------------------------------|
| Net weight:  | 19,28 kg                            |
| Gross weight:  | 20,78 kg                            |
| Groundwater resistant from lower edge of base section: | 3000 mm                             |
| Installation depth:                                    | 490 - 620 mm                        |
| Vertical adjustment:                                   | vertically adjustable upper section |
| Length:  | 617 mm                              |
| Width:   | 585 mm                              |
| Packaging dimension:                                   | length                              |
| Packaging dimension:                                   | width                               |
| Packaging dimension:                                   | height                              |

#### Tank/drain body

|                                |        |
|--------------------------------|--------|
| Pressure pipe connection (DN): | 32     |
| Pressure pipe connection (OD): | 40 mm  |
| Inlet nominal size (DN):       | 100 mm |
| Pumping volume:                | 20 l   |

#### Coverage features

|                       |                      |
|-----------------------|----------------------|
| Type of cover:        | tileable cover plate |
| Cover material:       | Polymer              |
| Colour of cover:      | silver grey          |
| Width of cover:       | 366 mm               |
| Length of cover:      | 366 mm               |
| Drainage function:    | yes                  |
| Cover locking:        | Lock & Lift          |
| Load class:           | K 3 (EN 1253-1)      |
| Max. flooring height: | 16 mm                |

#### Pumping device

|  |                                |
|--|--------------------------------|
| Pump control:                                      | GTF 500 resistant              |
| Number of pumps:                                   | 2                              |
| Connection type:                                   | coded plug                     |
| Rated current:                                     | 2,7 A                          |
| Length of mains cable for pump:                    | 5 m                            |
| Protection class control unit:                     | IP 68 (3m)                     |
| DSC:   | integrated                     |
| Max. temperature (permanent) of conveyed material: | 40 °C                          |
| Hot water resistance for a short time (2 min):     | 80 °C                          |
| Max. pumping capacity:                             | 10 m <sup>3</sup> /h           |
| Max. pumping height:                               | 8 m                            |
| Speed:   | 2800 U/min                     |
| Power P1:  | 0,6 kW                         |
| Power P2:  | 0,36 kW                        |
| Operating mode:                                    | S1                             |
| Type of fuse required (electrical protection):     | C 16 A                         |
| Type of pump connection cable:                     | H07RN-F 3G 1.5 mm <sup>2</sup> |

|   |                     |
|---|---------------------|
| Impeller type:                          | Multi-vane impeller |
| Free passage:                           | 10 mm               |
| Control                                 |                     |
| Control unit:                           | Comfort             |
| Alarm sensor:                           | optical probe       |
| Level measurement instrument:           | Immersion pipe      |
| Type of level measurement:              | pneumatic           |
| Protection class probe:                 | IP 54               |
| Mains frequency:                        | 50 Hz               |
| Operating voltage:                      | 230 V               |
| Connection type:                        | coded plug          |
| Length of mains cable for control unit: | 1,4 m               |
| Potential-free contact:                 | optional            |
| GSM interface:                          | yes                 |
| USB interface:                          | yes                 |
| Log book function:                      | yes                 |
| Multi-line display:                     | yes                 |
| Battery buffering:                      | yes                 |
| Self-diagnosis system (SDS):            | yes                 |
| Rated current:                          | 2,7 A               |